



THE HOPE OF OHIORISE

Habeebah Rasheed Grimes
CEO
May 3, 2021

What is OhioRISE?



Mike DeWine
Ohio Governor

OhioRISE: A New Vision for Care and Outcomes



OhioRISE (Resilience through Integrated Systems and Excellence)

Ohio's Current System for Kids with Multi-System Needs

Over 40% of kids over age 15 in the child welfare system are in congregate care



140 kids per day are receiving care out of state - a 200% increase in kids per year compared to 2016



38% of Youth with Multi-System Needs have individuals in their families with a history of OUD, SUD, and/or SED primary diagnosis



What The Evidence Tells Ohio



Kids with the most complex multi-system needs require a very different type of care coordination.



OhioRISE

Resilience through Integrated Systems and Excellence

A specialized managed care organization (MCO) with expertise in providing services for the most complex multi-system youth

Specialized MCO

ODM will procure a special type of MCO – a prepaid inpatient health plan (PIHP) – to ensure financial incentives and risks are in place to drive appropriate use of high quality behavioral health services.

Shared Governance

OhioRISE features multi-agency governance to drive toward improving cross-system outcomes – we all serve many of the same kids and families.

Coordinated and Integrated Care & Services

OhioRISE brings together local entities, schools, providers, health plans, & families as a part of our approach for improving care for enrolled youth.

Prevent Custody Relinquishment

OhioRISE will utilize a new 1915c waiver to target the most in need and vulnerable families and children to prevent custody relinquishment.

OhioRISE (Resilience through Integrated Systems and Excellence) | Ohio Medicaid Managed Care



OhioRISE

Resilience through Integrated Systems and Excellence

A specialized managed care organization (MCO) with expertise in providing services for the most complex multi-system youth

Specialized MCO

ODM will procure a special type of MCO – a prepaid inpatient health plan (PIHP) – to ensure financial incentives and risks are in place to drive appropriate use of high quality behavioral health services.

Shared Governance

OhioRISE features multi-agency governance to drive toward improving cross-system outcomes – we all serve many of the same kids and families.

Coordinated and Integrated Care & Services

OhioRISE brings together local entities, schools, providers, health plans, & families as a part of our approach for improving care for enrolled youth.

Prevent Custody Relinquishment

OhioRISE will utilize a new 1915c waiver to target the most in need and vulnerable families and children to prevent custody relinquishment.

OhioRISE Enrollment

- ✓ Enrolled in Medicaid (managed care or fee for service)
- ✓ Up to age 21
- ✓ In need of significant behavioral health services
- ✓ Meet functional needs criteria as assessed by the Child and Adolescent Needs and Strengths (CANS)
- ✓ Estimate 55-60,000 children & youth by end of year 1

OhioRISE Services

- ✓ All existing behavioral health services – with a few limited exceptions (ex: BH emergency dept.)
- ✓ Intensive Care Coordination
 - Consistent with principles of High-Fidelity Wraparound
 - Delivered by a regional “Care Management Entity”
 - Two levels – intensive and moderate
- ✓ Intensive Home Based Treatment (IHBT)
- ✓ Psychiatric Residential Treatment Facility (PRTF)
- ✓ New 1915(c) waiver that runs through OhioRISE
 - Unique waiver services & eligibility
- ✓ Mobile Response and Stabilization Service (MRSS)
 - Also covered outside of OhioRISE (MCO and FFS)

OhioRISE Ecosystem

Family and Children First Cabinet Council:
Governor’s Office of Children's Initiatives, Office of Family & Children First MHAS, ODJFS, DODD, ODM, DYS, DRC, ODH, ODE,
Federal and State funds | Governance and Oversight

Medicaid Managed Care Organizations (MCOs)
Physical health, limited BH services

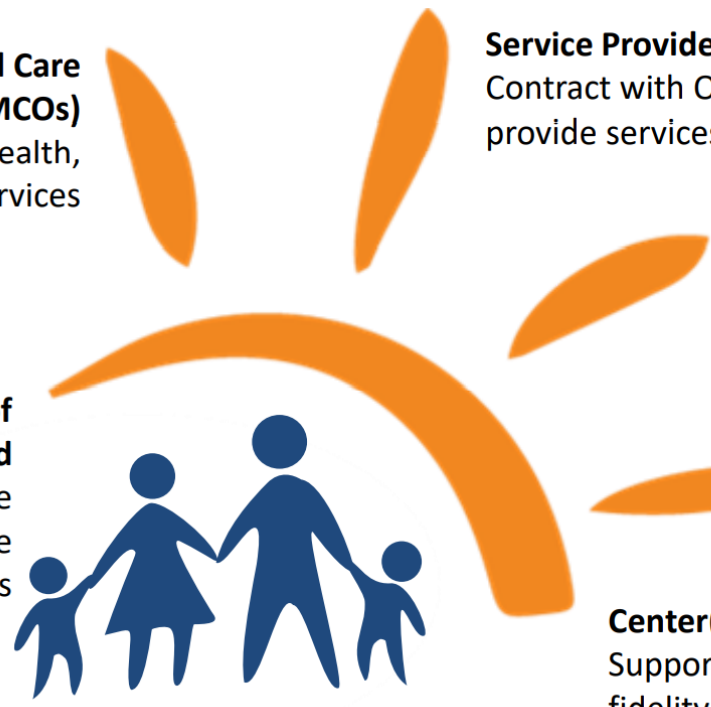
Service Providers
Contract with OhioRISE & MCOs to provide services

OhioRISE Plan
Contract with CMEs, providers

Department of Medicaid
Contract, provide oversight of the OhioRISE and MCOs

Network of Care Management Entities (CMEs)
Provide Intensive Care Coordination using High Fidelity Wraparound

Center(s) of Excellence (COEs)
Support evidence-based practices, training, fidelity reviews, workforce development



OhioRISE MCO

As the OhioRISE MCO, Aetna will be responsible for:

1. Building capacity for new intensive, community-based services by developing and strengthening partnerships with community providers.
2. Designing outcomes-based payment innovations and identifying strategies to leverage individual practitioners' unique strengths and support services.
3. Serving as a single point of accountability to assist families, health care providers, and other system partners in accessing services and supports when needed.
4. Collaborating with Medicaid's next generation managed care organizations to develop agreements and operating relationships responsive to systemic and individual member issues

Follow the Work of OhioRISE

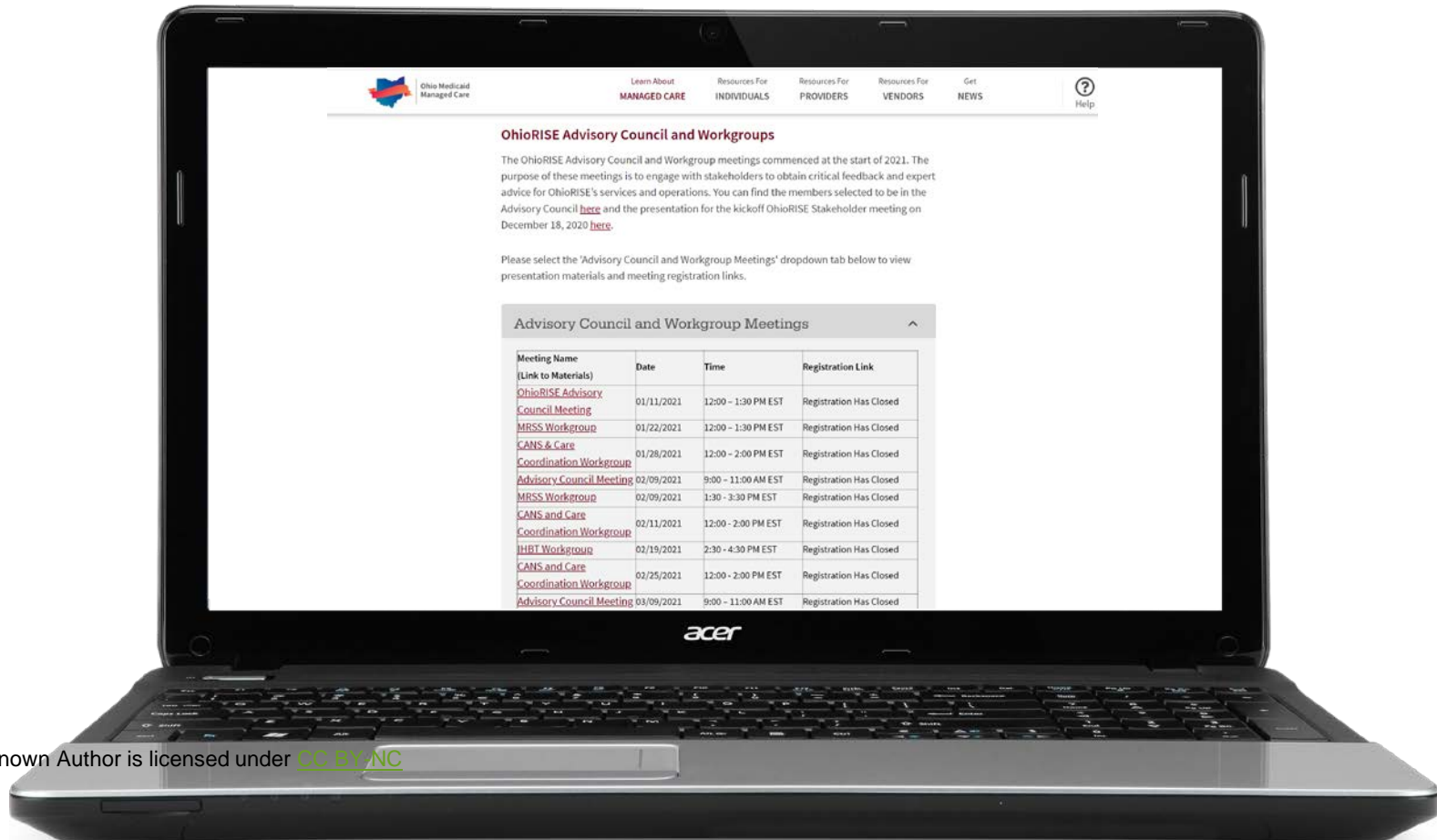


Photo by Unknown Author is licensed under [CC BY-NC](#)

Questions

