



POST ADOPTION AND KINSHIP SERVICES

MARCIE GIRDLESTONE, LPCC-S
MENTAL HEALTH DIRECTOR

Post Adoption and Kinship Services at Pathway

- We are committed to strengthening the lives of children and families
- We empower, guide, educate and support the adoptive and kinship communities
- We assist in efforts to preserve permanency when needed
- We support the entire family in learning skills to build connections



Post Adoption and Kinship Specialists

- Helping to address the effects that separation, loss, and trauma can have on children who have been adopted
- Advocating and linking children and their families to services that address special needs and help them be successful
- Guiding family members in strengthening their relationships and deepening their attachment and bonding



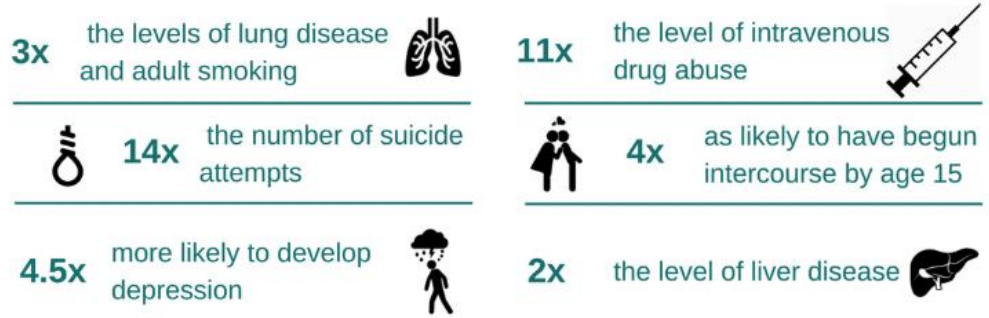
A Trauma-Informed Organization



- Understands the origins of trauma and the impact
- Increases safety for all
- Improves the social environment in a way that improves relationships for all
- Cares for the caregivers
- Increases the quality of services
- Reduces negative encounters and events
- Creates a community of hope and health
- Improves long-term health outcomes



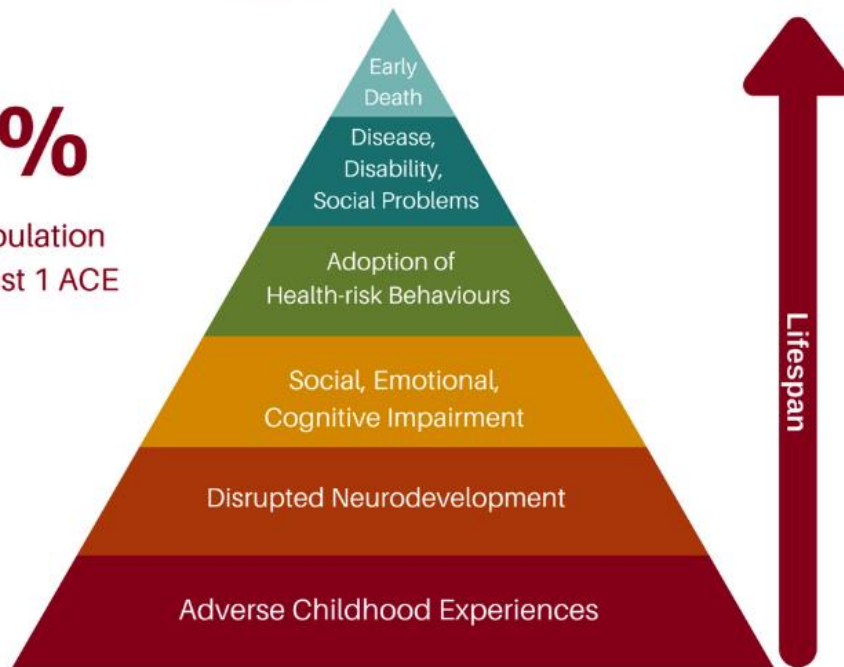
4 or more ACEs



“ Adverse childhood experiences are the single greatest unaddressed public health threat facing our nation today ”

Dr. Robert Block, the former President of the American Academy of Pediatrics

67%
of the population
have at least 1 ACE

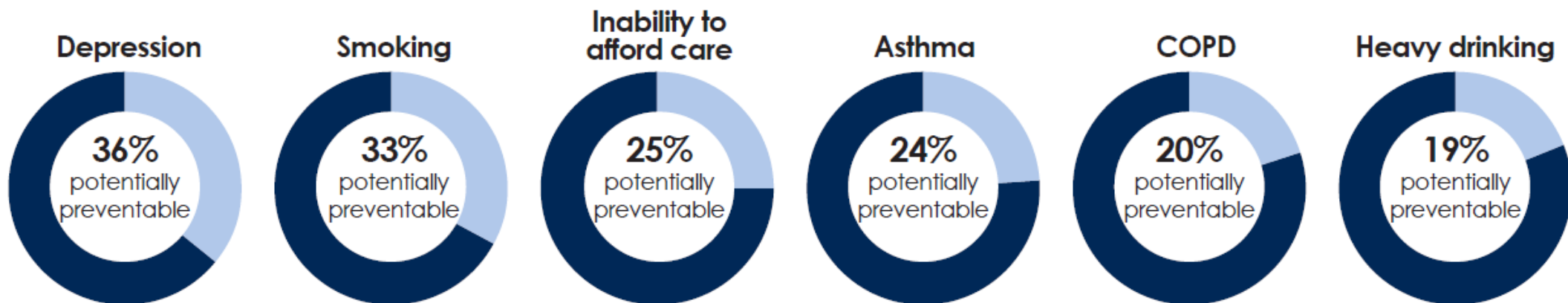


Emotional abuse	
Outcome	PAR
Depression	16%
Current smoking	12%
Living in a household with a person with substance use problems	
Outcome	PAR
Current smoking	14%
Living in a household with a person with a mental illness	
Outcome	PAR
Depression	20%
Asthma	13%
Inability to afford health care	14%
Sexual abuse	
Outcome	PAR
Depression	15%
Living in household with a person who was incarcerated	
Outcome	PAR
Current smoking	7%
Inability to afford care	12%

Source: Data from the 2015 Behavioral Risk Factor Surveillance System was provided by the Ohio Department of Health's Division of Health Improvement and Wellness. Analysis by Ohio University, Voinovich School of Leadership and Public Affairs.



Figure 9. Potential impact of preventing exposure to ACEs on six health outcomes in Ohio



Source: Data from the 2015 Behavioral Risk Factor Surveillance System was provided by the Ohio Department of Health's Division of Health Improvement and Wellness. Analysis by Ohio University, Voinovich School of Leadership and Public Affairs.

Resilience

- **PROTECTIVE FACTORS -ability to recover and adapt following an event**
- Not every child exposed to ACEs suffers poor health outcomes as a result; protective factors can curb the harmful effects of ACEs by diminishing the stress response.
- Protective factors are assets and resources that promote positive development
 - The presence of positive relationships
 - Safe environments
 - Supports to ensure the healthy development of social and emotional skills
- The presence of protective factors can mitigate the harmful effects of ACEs, even for children who have been exposed to four or more ACEs.
- Mitigating the impact of ACEs requires
 - Focus on preventing future ACEs
 - Intervening early and providing trauma-informed care when ACEs occur
 - Building protective factors that foster resiliency



A Zero Suicide Organization

- Zero Suicide is a commitment to suicide prevention
- We believe that suicide deaths are preventable
- Staff are trained in tools to screen, assess and treat for suicide risk
- Screening occurs at every appointment



Groups

- Support Groups
 - Adoptive and Kinship Mothers Breakfast Group
 - Canton
 - Holmes County
 - Zoom
 - Kinship Connection Group
 - Zoom
 - Adoptive and Kinship Dads Group
- Therapy Group
 - Connected Family



Respite

- Overnight or day respite in a foster home
- Hourly respite or mentoring



Adoption and Trauma Competent Mental Health Services



- Individual and Family Therapy
- Case Management
- Family Empowerment Program
- TBRI®



Consultation

- Linkage
- Referral
- Advocacy
- Educational Events



Evidence Based Practices

- Interventions based on years of attachment, sensory processing, and neuroscience research, but the heartbeat of TBRI is connection
- When attachment is derailed, children may display confusing behaviors and struggle to trust even loving, safe caregivers.
- Over 85% of children from hard places have some sort of sensory need beyond that of a child who has not experienced early developmental trauma.
- Understanding how to interpret behavioral outburst as possible sensory needs and then meet those needs is key in providing felt safety for children.
- Understanding the importance of attachment needs, we can help these children begin to trust the adults who care for them.



Support for the Entire Family

- Pathway supports adoptive families throughout Northeast Ohio after adoption and with kinship care
- Professionals who understand and are trained to work with adoptive families
- Supports that make a difference and connect with resources and other adoptive families
- Families report improved relationships and expectations within their family as a result of receiving supports and treatment at Pathway



Trauma Informed & Zero-Suicide Agency

Mental Health Services

Individual and Family Counseling
Group Counseling
Case Management
Transitional Age Individual and Group Services
Family Empowerment

Adoption and Kinship Supports

Support Groups
Consultations
Focused Mental Health Treatment
Mentoring
Ohio KAN Navigator

Foster Care

Foster Homes
Foster Parent Training
Respite Services
Mentoring

LOCATIONS

BROOK PARK

CANTON

MILLERSBURG

SEBRING

330-493-0083

www.pathwaycfc.org

